

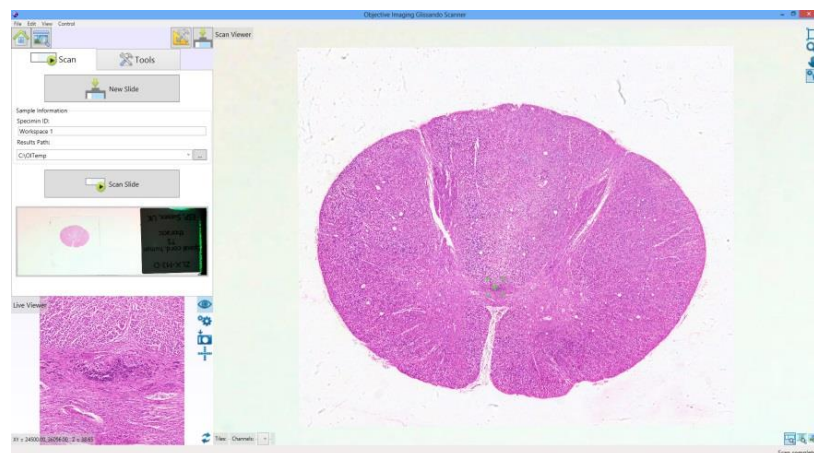
# Glissando Slide Scanner

## *Fast, affordable whole slide imaging from Objective Imaging*

The new Glissando™ scanner from Objective Imaging delivers fast, high quality whole slide image acquisition in an affordable package. The compact footprint and simple, intuitive user interface make the Glissando scanner the ideal platform for quick scanning of standard microscope slides.

### Key Features

- ◆ Excellent price/performance
- ◆ Compact, convenient size
- ◆ Scan up to two standard glass slides
- ◆ Fast, high-quality whole slide images
- ◆ 1D and 2D barcode reader
- ◆ Automatic tissue detection and focus setup
- ◆ Proven Turboscan™ high performance tile scanning engine
- ◆ Integrated system control computer with Ethernet connection
- ◆ Efficient, intuitive software interface



# Glissando Slide Scanner

The Glissando Slide Scanner integrates the latest automation technologies and high quality components with our proven Turboscan™ scanning engine to provide an effective, reliable—and affordable—tool for the rapid acquisition of Whole Slide Images (WSI) from standard glass microscope slides.

The easy-to-use Glissando software's intuitive design and automated tissue detection, focus setup, and barcode reading ensure excellent results, right out of the box.

Contact Objective Imaging for further details about the Glissando scanner and other automated scanning products.



## Specifications

<b>Slide Capacity</b>	Up to two 25 mm x 75 mm glass slides
<b>Scanning Engine</b>	Turboscan™ fast tiling technology with predictive focus
<b>Tissue Detection</b>	Automatic region definition and focus setup
<b>Scanning Objective Lens</b>	20X/0.75 Plan Apo
<b>Camera Sensor Size</b>	2048 x 2048 pixels
<b>Sensor Image Resolution</b>	0.5 µm (with 20X objective)
<b>Barcode Reader</b>	Image-based 1D and 2D (Datamatrix, QR Code)
<b>Control Computer</b>	Integral Windows 8 mini-PC with Ethernet connection
<b>On-board Storage</b>	256 GB solid state drive
<b>Physical Dimensions</b>	320 mm (W) x 297 mm (H) x 447 mm (D)
<b>Electrical</b>	Universal AC input, 50/60 Hz

Note: Specifications are subject to change without notice